

Schema di montaggio Assembly diagram

U.0186 60x1.8x36 U.0187 80x1.8x36
 U.0188 100x1.8x36 U.0189 120x1.8x36
 U.0190 140x1.8x36 U.0191 160x1.8x36

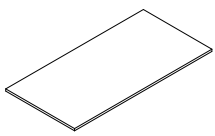
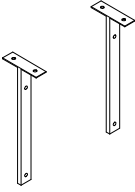
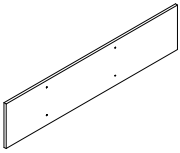


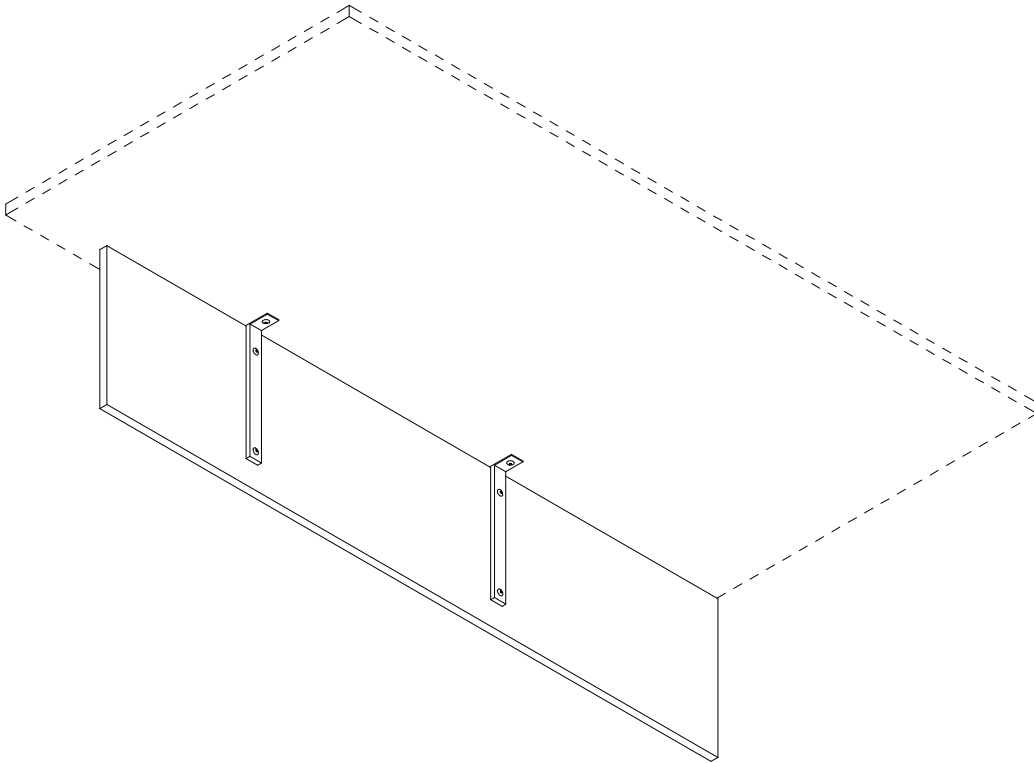
Ferramenta Hardware	Componenti Components	 Piano (A) Top (A)	 Staffe (B) T shaped brackets (B)	 Modesty panel (C) Modesty panel (C)			
Bullone da 6x20 (V) Bolt 6x20 (V)	n°8						
 Bullone da 6x16 (Z) Bolt 6x16 (Z)	n°8						
Chiave esagonale Hexagonal key	n°1						
							
							

Fig.1 Unire le staffe (B) al piano (A) tramite i bulloni (Z)
 Fig.1 Fasten the T shaped brackets (B) to the top (A) by means of the bolts (Z)

1) Inserire le staffe (B) nel piano (A) ed inserire i bulloni (Z) attraverso gli appositi fori
 1) Insert the T shaped brackets (B) in the top (A), insert the bolts (Z) in the pre-drilled holes

2) Inserire le staffe (B) nel modesty panel (C) ed inserire i bulloni (V) attraverso gli appositi fori.
 2) Insert the T shaped brackets (B) in the modesty panel (C), insert the bolts (V) in the pre-drilled holes

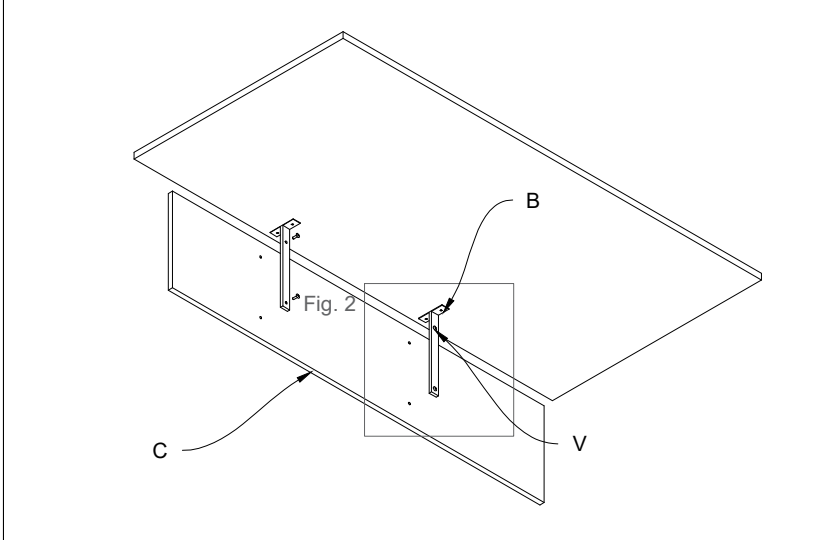
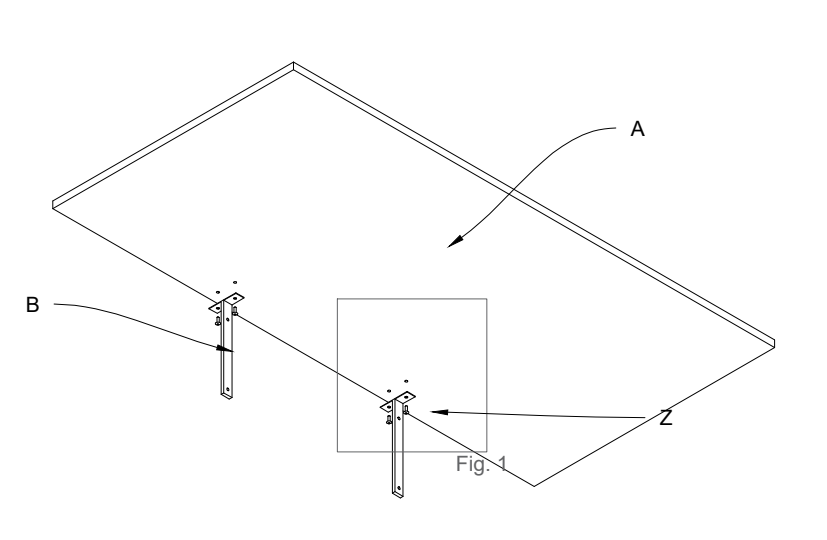
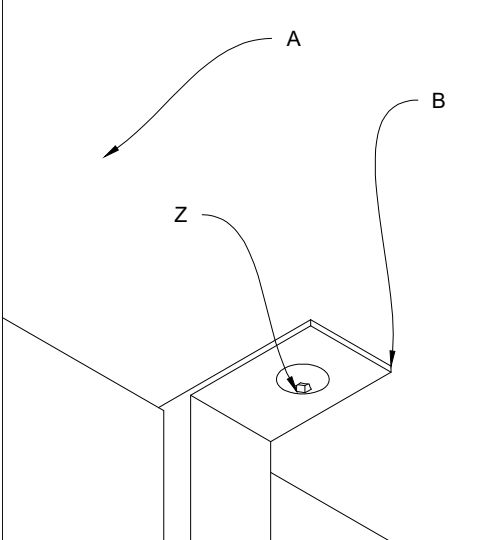


Fig.2 Unire la staffa (B) al modesty panel (C) tramite i bulloni (V)
 Fig.2 Fasten the T shaped brackets (B) to the modesty panel (C) by means of the bolts (V)

